

# UC 75 - 12

## 12V 75AH

### DEEP CYCLE

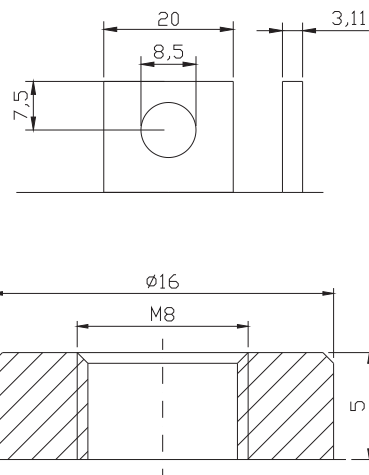
# Ultracell®

'Quality in Every Language'

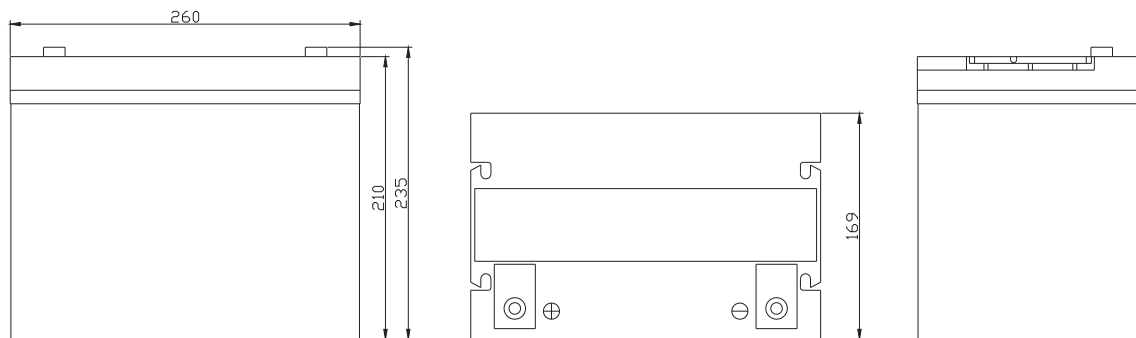
Image



Terminal Type



Dimensions



Specifications

Battery Model	UC 75 - 12			
Designed Floating Life	8 Years			
Capacity (25°C)	20HR (3.8A, 1.75V)	10HR (7.5A, 1.75V)	5HR (13A, 1.75V)	1HR (47A, 1.75V)
	76AH	75AH	65AH	47AH
Dimensions	Length	Width	Height	Total Height
	260mm	169mm	210mm	235mm
Approx. Weight	23.0Kg			
Internal Resistance	Fully Charged at 25°C 0.0055 Ohm			
Self Discharge	3% of capacity declined per month at 25°C			
Capacity Affected by Temperature	40°C	25°C	0°C	-15°C
	102%	100%	85%	65%
Charge Voltage (25°C)	Cycle Use		Float Use	
	14.4-15V (-30mV/C), max. Current: 18.7A		13.6-13.8V (-20mV/C)	

Construction

Component — Raw material  
 Positive — Lead dioxide  
 Negative — Lead  
 Container — ABS (Flame Retardent optional)  
 Cover — ABS (Flame Retardent optional)

Sealed and maintenance free option

Sealant — Epoxy Resin  
 Safety Valve — EPDR  
 Terminal — Copper  
 Separator — Fibre Glass  
 Electrolyte — Sulphuric acid

Non-spillable construction design



CE 1188



MH 29410

Tel | +44 (0) 151 523 2777  
 Fax | +44 (0) 151 523 0855  
 E-mail | info@ultracell.co.uk  
 Web | www.ultracell.co.uk

# UC 75 - 12

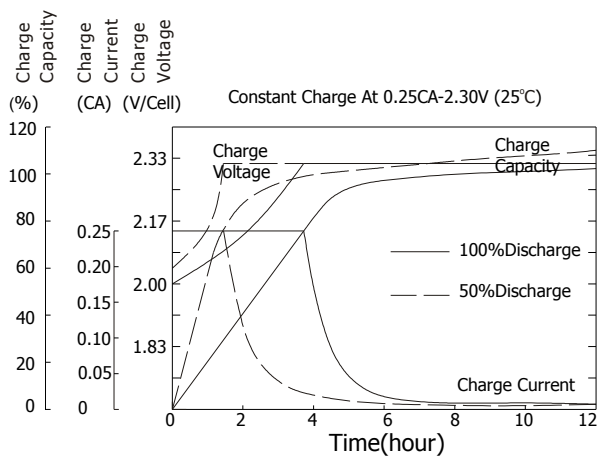
12V 75AH

DEEP CYCLE

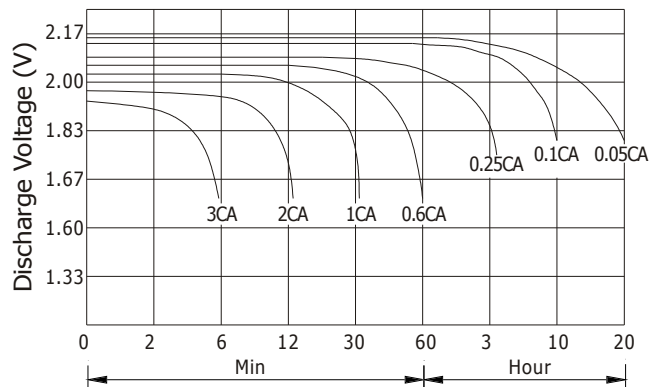
# Ultrace//<sup>®</sup>

'Quality in Every Language'

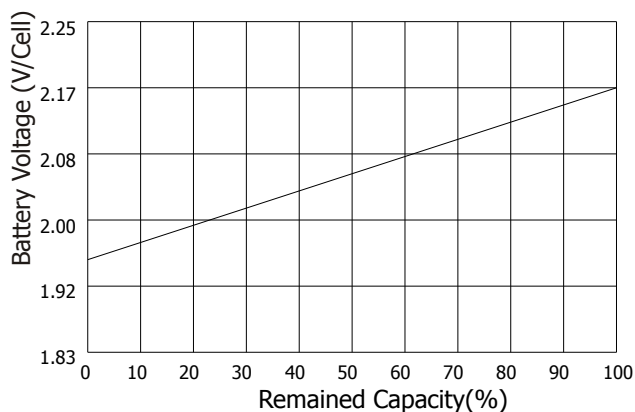
## Charge Characteristic



## Discharge Characteristic 25°C



## Relationship of OCV and state of charge



## Life Expectancy Cycle Use:

- 100% depth of discharge 300 cycles
- 80% depth of discharge 500 cycles
- 50% depth of discharge 800 cycles
- 30% depth of discharge 1300 cycles
- 20% depth of discharge 1600 cycles

## Constant Current Discharge Ratings - amperes at 25°C

F.V / Time	5 MIN	10 MIN	15 MIN	30 MIN	1 HR	3 HR	5 HR	10 HR	20 HR
1.60 V	319	199	150	91.3	54.0	23.7	14.5	7.89	4.26
1.67 V	299	188	144	87.4	53.3	22.8	14.2	7.82	4.12
1.70 V	274	182	141	79.4	51.7	21.3	13.9	7.78	4.05
1.75 V	269	176	136	75.4	49.2	20.6	13.6	7.76	3.94
1.80 V	241	168	124	69.9	46.1	19.8	12.8	7.60	3.84
1.85 V	212	160	111	64.3	43.0	19.1	12.0	7.50	3.77

## Constant Power Discharge Ratings - watts at 25°C

F.V / Time	5 MIN	10 MIN	15 MIN	30 MIN	1 HR	3 HR	5 HR	10 HR	20 HR
1.60 V	560	358	273	164	97.5	42.1	24.5	16.0	8.40
1.67 V	540	349	270	161	96.9	40.7	24.4	15.9	8.10
1.70 V	509	346	268	151	95.1	38.9	24.1	15.8	8.00
1.75 V	512	345	265	146	93.4	38.0	23.9	15.6	7.90
1.80 V	468	340	246	140	88.1	36.9	23.1	15.4	7.72
1.85 V	425	322	223	131	82.8	35.8	22.4	15.2	7.62



CE 1188



MH 29410

Tel +44 (0) 151 523 2777  
 Fax +44 (0) 151 523 0855  
 E-mail info@ultracell.co.uk  
 Web www.ultracell.co.uk