

UCG 250 - 12

12V 250AH

AGM GEL

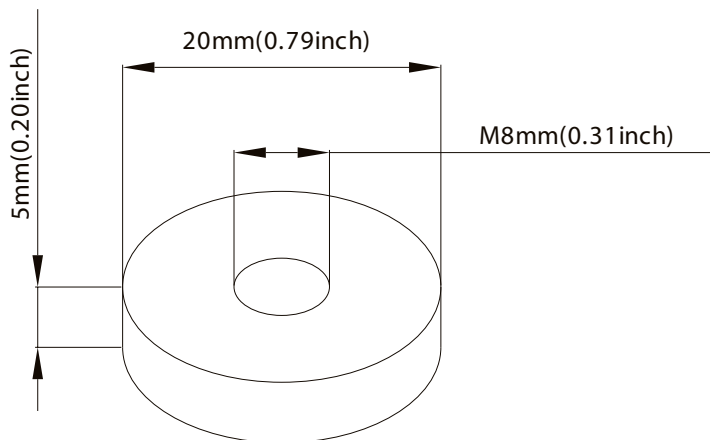
Ultracell®

'Quality in Every Language'

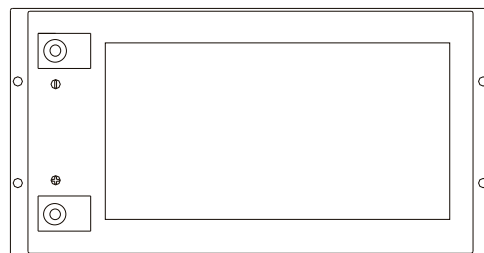
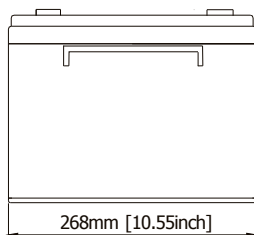
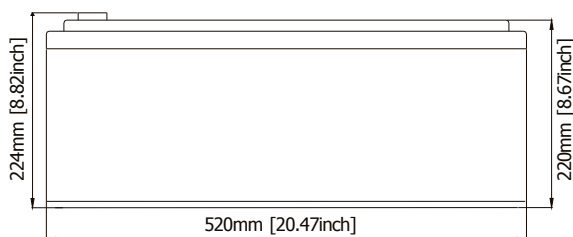
Image



Terminal Type



Dimensions



Specifications

Battery Model	UCG 250 - 12			
Designed Floating Life	15 Years			
Capacity (25°C)	20HR (13.0A, 1.75V)	10HR (25A, 1.75V)	5HR (43A, 1.75V)	1HR (154A, 1.75V)
	260AH	250AH	215AH	154AH
Dimensions	Length	Width	Height	Total Height
	520mm	268mm	220mm	224mm
Approx. Weight	76.2Kg			
Internal Resistance	Fully Charged at 25°C 0.004 Ohm			
Self Discharge	3% of capacity declined per month at 25°C			
Capacity Affected by Temperature	40°C	25°C	0°C	-15°C
	102%	100%	85%	65%
Charge Voltage (25°C)	Cycle Use		Float Use	
	14.4 - 15V (-30mV/C), max. Current: 62A		13.6 - 13.8V (-20mV/C)	

Construction

Component ——— Raw material
 Positive ——— Lead dioxide
 Negative ——— Lead
 Container ——— ABS (Flame Retardent optional)
 Cover ——— ABS (Flame Retardent optional)

Sealed and maintenance free option

Sealant ——— Epoxy Resin
 Safety Valve ——— EPDR
 Terminal ——— Copper
 Separator ——— Fibre Glass
 Electrolyte ——— Sulphuric acid and Gel

Non-spillable construction design



CE 1188



MH 29410

Tel | +44 (0) 151 523 2777
 Fax | +44 (0) 151 523 0855
 E-mail | info@ultracell.co.uk
 Web | www.ultracell.co.uk

UCG 250 - 12

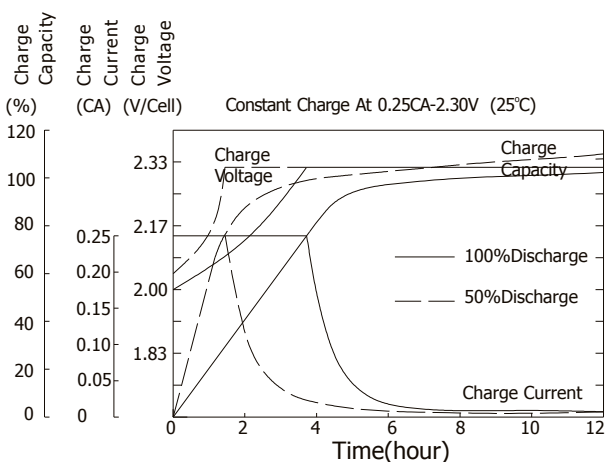
12V 250AH

AGM GEL

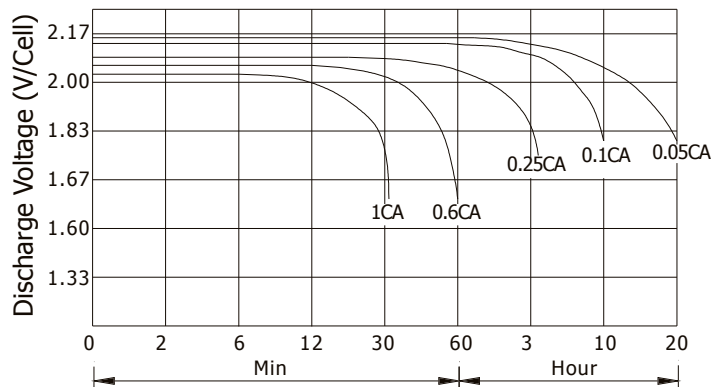
Ultracell®

'Quality in Every Language'

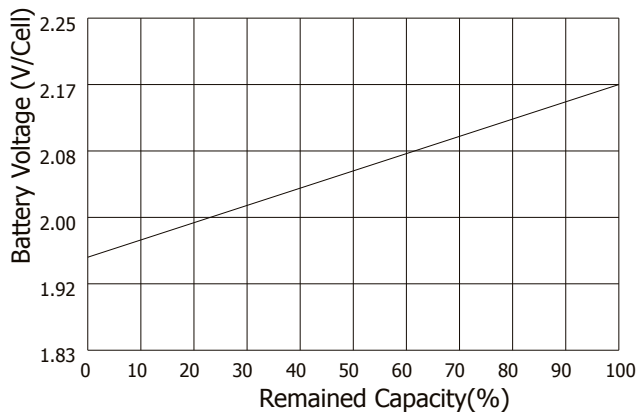
Charge Characteristic



Discharge Characteristic 25°C



Relationship of OCV and state of charge



Life Expectancy Cycle Use:

- 100% depth of discharge 350 cycles
- 80% depth of discharge 600 cycles
- 50% depth of discharge 900 cycles
- 30% depth of discharge 1500 cycles
- 20% depth of discharge 1700 cycles

Constant Current Discharge Ratings - amperes at 25°C

F.V / Time	5 MIN	10 MIN	15 MIN	30 MIN	1 HR	3 HR	5 HR	10 HR	20 HR
1.60 V	858	588	429	257	158	65.5	44.8	26.5	13.2
1.67 V	772	537	417	250	158	65.3	44.5	26.1	13.1
1.70 V	733	517	402	245	158	65.3	44.5	25.9	13.1
1.75 V	652	478	380	240	156	64.8	44.1	25.5	13.1
1.80 V	588	443	363	233	154	64.6	43.7	25.0	12.6
1.85 V	446	365	314	214	152	64.3	43.4	24.6	11.9

Constant Power Discharge Ratings - watts at 25°C

F.V / Time	5 MIN	10 MIN	15 MIN	30 MIN	1 HR	3 HR	5 HR	10 HR	20 HR
1.60 V	1414	975	760	485	312	126	87.6	52.0	25.8
1.67 V	1340	963	752	475	302	126	87.6	51.2	25.7
1.70 V	1252	938	740	463	294	126	87.6	50.8	25.7
1.75 V	1166	877	696	451	291	124	86.6	49.9	25.6
1.80 V	1046	816	654	439	286	122	85.2	49.0	24.7
1.85 V	838	676	571	402	283	122	84.0	48.2	23.2



CE 1188



MH 29410

Tel +44 (0) 151 523 2777
 Fax +44 (0) 151 523 0855
 E-mail info@ultracell.co.uk
 Web www.ultracell.co.uk